



# Yorkshire Artspace

## Starter Studio Application Pack: Silversmith & Jewellery

To apply for the 2017-2019 programme (starting early Oct 2017 ending late Sep 2019) please read the following information and complete the application form.

To foster new talent and support early career artists, Yorkshire Artspace runs two Starter Studio Programmes: one for Designer Silversmiths & Jewellers and one for Ceramicists.

Designed to help ambitious and entrepreneurial artists at an early career stage to develop their skills and creative enterprises in a supportive environment, the programmes offer access to shared workspace and equipment, technical and mentor support, business advice and occasional commission and exhibition opportunities.

The Starter Studio Programme for Silversmiths & Jewellers was established in January 2002. Delivered from a fully equipped silversmith workshop at the award winning Persistence Works Studios, over 80% of the silversmiths who have completed the programme have set up their own silversmith workshop.

We are able to offer places to three new starters each year.

### **Key Features of the 2 year programme include:**

- 24/7 access to shared fully equipped studio space
- Access to technical and mentor support
- Business advice and support
- Bursary to undertake online training via The Design Trust
- Exhibition and commission opportunities
- Cost £120 per month (inclusive of heat/power) plus 1 month bond repayable on leaving the programme
- Receive a 20% discount on regular studio rental for 2 years from completion of the programme (subject to studio availability)

All **mentors** for the Programme are experienced, nationally known silversmiths and/or jewellers, including include Brett Payne, Chris Knight, Maria Hanson, Rebecca Joselyn, Coilin O'Dubhghaill and Jennie Gill.

In 2014 our technical design expert and skills trainer Cameron Maxfield, who offers support to all our programme beneficiaries on a weekly basis, won the prestigious Marsh Heritage Skills Trainer Award. In 2013 we were also shortlisted for The Craft Skills Award; watch the film commissioned especially for the award, featuring Starters Colette Bishop and Zoe Watts, mentor Brett Payne and technical expert Cameron Maxfield.

*"Having established and renowned silversmiths as our mentors has given us a better sense of direction. Because they share their knowledge and experience so openly, it has really helped with determining how to take the first and often frightening steps to setting up our own silversmithing businesses"* Sarah Denny, Silversmith (and previous beneficiary of the programme)

The Programme is **sponsored by Sheffield Assay Office**, who commissioned work by participants between 2004 -2014 to create the Little Gems collection. Little Gems was exhibited in full to over 10,000 visitors at the Goldsmiths Centre in London in 2015 and will be shown again in Museum Sheffield's Metalwork Gallery in 2016. In 2014 the Sheffield Assay Office launched a new Award 'Precious Little Gems', the start of a new collection of fine silverware which will be shown as part of Sheffield's Year of Making in 2016.

*"I am extremely proud of what has been achieved over the last 9 years and delighted that the programme has contributed significantly to Sheffield's aim to remain the UK centre for innovative metalwork design and craftsmanship."* Ashley Carson, Assay Master, Sheffield Assay Office

Historically renowned throughout the world as a centre of excellence for the cutlery industry, **Sheffield** still has a thriving infrastructure for the silversmithing sector and many established silversmiths have workshops either at Yorkshire Artspace or elsewhere in the city.

Sheffield is a friendly and lively city with a population of approx. 700,000. Located on the boundary of the stunning Peak District National Park, Sheffield has great transport links (approx. 2 hours to London and approx 1 hour to Manchester, Birmingham, Nottingham and Leeds by train). It is claimed that Sheffield has more artists than any other city in England apart from London and this is reflected in the number of studio groups in the city. Sheffield is a great place to get your creative career started and we are happy to help you find your way around if you are new to the city.

Visit Our Favourite Places for more info. [www.ourfaveplaces.co.uk](http://www.ourfaveplaces.co.uk)

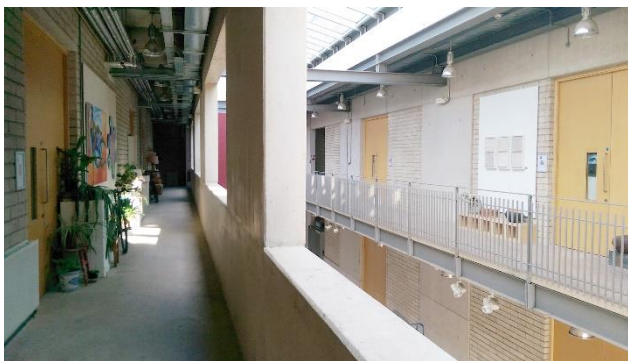
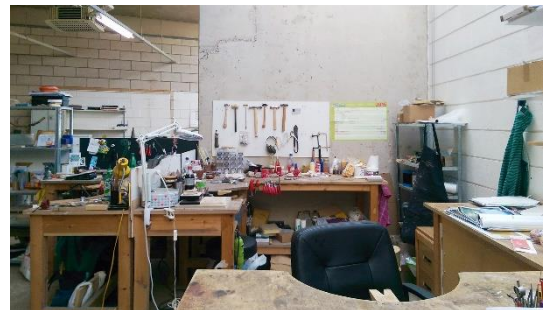


At work in the Starter Studio.

Above: Nina Rithalia. Below: Florence Carter.



[Persistence Works Studios](#),  
Sheffield City centre.



Above central atrium at Persistence Works

Above left: starter studio





## **2. Visual Documentation**

Please email up to 10 images contained within a PDF document to illustrate your work. Please ensure the document does not exceed 8MB.

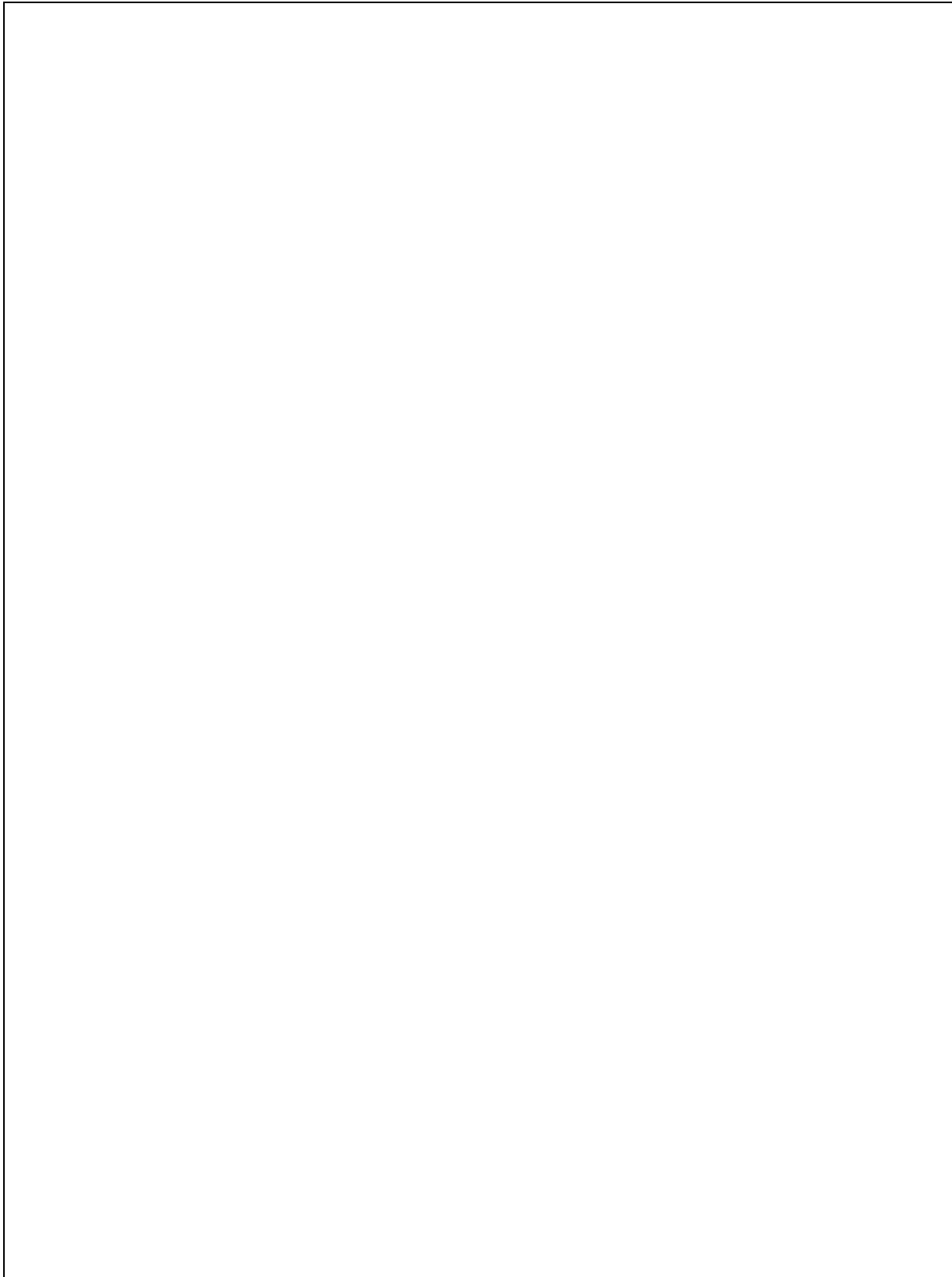
Please ensure each image is clearly labelled as follows: name of work, year made, materials and techniques used and size. Please provide any relevant image credit.

## **3. Relevant Achievements**

Please give a summary of relevant and recent achievements including educational qualifications, relevant work experience, workshops/projects attended, commissions, exhibitions and awards. Please continue on separate sheet if necessary.

#### 4. Ambitions & Targets

What are your long term ambitions and what do you hope to achieve during your time on the Starter Studio Programme? We will assess whether you are realistic with your ambitions. Please continue on a separate sheet if necessary.



## 5. You and the Programme

How will you use the Starter Studio Programme to achieve your ambitions and targets? We will assess whether we are able to give you the support you need. Please continue on separate sheet if necessary.

## 6. Referees

Please provide us with names and contact details of two referees. If you are a new graduate, one referee must be a former tutor.

|  |
|--|
| <p>1.</p><br><br><br><br><br><br><br><br><br><br><p>2.</p> |
|--|

## 7. Equal Opportunities Form

Please complete the attached Equal Opportunities form.

---

### Application Process

We accept applications throughout the year. Applications will be considered as they are received and places offered accordingly.

There is an **overall cut-off deadline of 10<sup>th</sup> April** for the Starter Studio Programme commencing in the respective October. However please note that all available places may have been offered prior to this deadline, so please do not delay in registering your interest and submitting an application.

The usual process is that following application you will be invited to attend an interview; a chance to meet face to face, show examples of your work and ask questions. Interviews can be arranged throughout the year until May, for the Programme commencing in the respective October.

### How to Apply

To apply for the 2017-2019 programme (starting early Oct 2017 ending late Sep 2019) please send the above information (points 1-7) and optional additional information (CV, publicity material, artist statement) to Rachael Dodd, Programme Manager via email to [rachael@artspace.org.uk](mailto:rachael@artspace.org.uk)

**We strongly recommend that you visit our facilities before submitting an application. The Starter Studio Open Day takes place during our annual Open Studios event in November (full details, dates and times on our website) and we advise applicants use the opportunity to explore our facilities, chat with studio holders and ask any questions.**

Please contact Rachael Dodd, Programme Manager at Yorkshire Artspace with any queries, on 0114 2130111 or [rachael@artspace.org.uk](mailto:rachael@artspace.org.uk)



## Equal Opportunities Monitoring Form

Completing this form is optional but doing so will help us meet our commitment to equality of opportunity. The form will be detached as soon as we receive it and filed anonymously. This information will not be shared with third parties.

Which best describes your racial or cultural origins?

|                     |  |                |  |             |  |
|---------------------|--|----------------|--|-------------|--|
| Caribbean           |  | African        |  | Arabic      |  |
| Indian              |  | Pakistani      |  | Bangladeshi |  |
| Chinese             |  | Latin American |  | Irish       |  |
| British or European |  | Other          |  |             |  |

Are you: Male  Female

Age:  0-18  19-24  25-34  35-44  45-54  55-64  65+

Do you consider yourself to have a disability: Yes  No

If Yes, what are your individual needs/requirements? (these can be discussed at interview)

Are you currently in paid work? (inc self-employment): Yes  No

Is there anything else related to equal opportunities that you think we should know about?

### Explanatory Notes:-

Yorkshire Artspace Society is committed to eliminating discrimination on the grounds of racial group, origin or nationality, sex, disability, religion or age. In accordance with the Disabled Persons (Employment) Act, Sex Discrimination Act, Race Relations Act and the relevant codes of practice, we are carrying out equal opportunities monitoring. This will help us to develop positive action strategies to overcome discrimination. The form will be detached from your application form and will not be used to make decisions about your application for residency, membership, studio space, commissions, workshops or other opportunities. The information will be collated for monitoring purposes and the form will be destroyed. No individual can be identified from this form.