

YORKSHIRE ARTSPACE SOCIETY

YORKSHIRE ARTSPACE SOCIETY
Annual Report
2005-2006



'Winter Wonderland'
Chloe Brown

YORKSHIRE ARTSPACE SOCIETY

Contents	Page
Introduction	2
Foreword	3
The year's developments	4
The year's activities	5-11
The year's finances	12
Statement of Financial Activities and Balance Sheet	13,14

Introduction

Yorkshire ArtSpace Society was established in Sheffield in 1977 to provide **affordable workspace** for artists and craftspeople. The membership is made up of a wide variety of artists and makers and 68 members have studios at Yorkshire ArtSpace's purpose-built premises, Persistence Works.

As well as work space the Society offers a **professional development** service to visual artists in the Region covering many different aspects of visual arts practice and addressing the needs of artist and makers at various points in their careers.

The **Artist in Residence** Programme, launched in 2004, forms the heart of a wide ranging programme of activity that encompasses professional development as well as community outreach, education and public events.

Public access to the studios and artistic product is enabled through the annual Open Studio event and a dynamic exhibition programme.

The Society is run by a Board of Directors, a Members Committee and seven members of staff.

Acting Chair's Foreword

Paul Swales resigned as Chair of the Society prior to the AGM in February 2006. Paul has been the key player in the development of the Society in the last ten years, the inspirational not to say persistent force (with funding regimes, the City Council and other agencies) that working with the Board, Director, Staff and Spaceholders, brought about the transformational project of a new and bespoke studio building in a development that is recognised as unique in the UK - Persistence Works. Many of the developments of the year written up in this report reflect the maturing ambitions of our organisation: to continue to provide quality and reasonably priced studio accommodation in Sheffield; to undertake this core activity within a context encouraging the professional development and experience of artists and to be a public facing, highly networked organisation in the city's and the region's life. Paul's immense contribution to this work was recognised in a presentation accepted with characteristic modesty following his resignation.

Paul's departure along with other departures from the board in the course of 2005-6 (and on behalf of the Board, I here warmly acknowledge the contribution over recent years of, Helen Parrott, Jacqueline Yallop, Denis Carrington and particularly the acumen and counsel of Roger Heath) has inevitably heralded a period of re-focusing for in-coming members of the Board but work has continued to address key questions for the future, regarding the long term sustainability of Persistence Works, and the possibilities for future studio spaces in the city, along with the resourcing necessary to sustain and extend programmes for exhibition work, residency work and the Continued Professional Development programme and other ancillary activities.

The residency programme combines carefully thought-through organisational work by the team, shaping the residencies to have a tailored focus whilst preserving the possibility for the unexpected and dynamic on the part of the artists involved. Fruitful links were made through the residencies with Creative Partnerships (residency 1), the Sharrow community (Residency 2) and Sheffield Contemporary Art Forum (Residency 3), giving the residency programme a growing national reputation. The Board is grateful for all the inputs of staff and spaceholders alike to create these memorable focal points in the year.

Yorkshire ArtSpace now has some valued partnerships, some of considerable bearing and duration which make for an important underpinning of programmes or activity. We have continued to benefit from the welcome support of ACE Yorkshire. The foresight of the Sheffield Assay Office's support for early career silversmiths and metal ware artists, is paying dividends, appreciated by all. The Society continues to value collaboration and partnership with Sheffield Hallam University in hosting its Metalwork and Jewellery Degree Show and with Sheffield Art 05, the city-wide *Spectator T* contemporary art event.

Yorkshire Artspace Society knows a lot has been achieved but this is viewed as the foundation on which we can both consolidate and develop facilities and services for the benefit of the artists working in the city and their publics.

David Alston, Acting Chair

The year's developments

Audience Development has been top of our agenda in this year and our exhibition programme, together with the annual May Open Up and November Open Studios are now providing a valuable platform for showcasing contemporary work within the city. Our November Open Studio event attracted more visitors than ever and we aim to attract even more next year.

The education & outreach and professional development programmes have enabled the organisation to build useful and reciprocal partnerships with key partners in Sheffield and beyond.

We also looked at Board Development during this period, auditing existing skills and highlighting gaps in provision with new job descriptions for each Board member. Simon Walker, Clare McManus, David Morley, Peter Griffiths and Brett Payne joined the Board

Kate Dore, Director & staff team

The year's activities

Artist in Residence Programme

As a direct result of the Research and Development that the organisation underwent in 2004, we focused this year on securing and developing our programme activity. A successful £100k G4A bid was made to Arts Council England, Yorkshire to support a two year programme of artist residencies. Additional funding was secured from a variety of sources including Creative Partnerships, the Learning and Skills Council and the Single Regeneration Budget. Each of the six residencies focuses on a different area of visual arts practice and is used as starting point for the delivery of both training events and education and outreach projects. The three residencies that took place during the period of this report are discussed in the Activities section.

Residency 1 March/June 2005

Autonomy?!

Resident Artist – Benedict Phillips

Partner Organisation – Creative Partnerships

Lead artists in Schools – Gillian Brent, Peter Griffiths, Steve Pool, Frances Bossom

Placement artists - Louise Atkinson, Matthew Lewis, Georgina Hope, Robin Close, Silvia Champion, Mike MacGabhann, Sue Shaw, Bridget Murray

School Projects – artists encouraged pupils to lead and motivate their own learning experience, shape their own project and share with their peers at Herringthorpe Junior School, Rotherham, The Kingstone School, Barnsley, Brampton Cortonwood Infants, Barnsley, Rossington All Saints College, Doncaster.

Information Training event – a seminar for those working within the education sector – speakers; Benedict Phillips, David Gilbert, Nick Nuttgens, Creative Partnerships, and a training day for artists wanting to work in schools – speakers; Amy Solder, Creative Partnerships, Rachael Dodd, David Williamson Headteacher The Hill Primary School and Andy Hewitt freelance artist.

Publication - 1,400 copies of *Autonomy?!*

Funders – ACE, Creative Partnerships, Single Pot

"I enjoyed all aspects of this project, it gave me the opportunity to work in a completely different way, collaborate with other artists and be instrumental in developing the creative thinking and learning processes of the pupils we worked with" **Louise Atkinson, placement artist**



Left to right images from projects at; The Kingstone School, Herringthorpe Primary School, Rossington All Saints College and Brampton Cortonwood Infants School respectively

Residency 2 June/July 2005
'Social Function of Art'

Resident Artist – Hilary Lloyd

Partner Organisation – Sharrow Community

Lead artist in the community - Humberto Velez

Placement artists - Bodil Frenberg, Eric Winnert

Community Project - Artists United a hip-hop football derby at the Sharrow Festival bringing together local talents in music, dance and sport. An audience of hundreds saw this event at the Sharrow Festival.

Information Training event – on 'social engagement' in visual arts practice - speakers Angela Hind and Emma Chetcuti from The Public in Dudley, Hilary Lloyd, Humberto Velez

Funders – ACE, Awards for All

"The opportunity to work alongside Humberto has been fantastic. I have learned so much and enjoyed every minute of the Sharrow project and I'm hoping it will lead to more opportunities like this in the near future. Thanks very much for selecting me." **Eric Winnert, placement artist**

"This residency has been the best! because of the freedom to make art with no stipulations or pressure to exhibit. The time and money have been massively important for me also. I have become more confident in terms of scale and I have been able to realise ideas that I have had for quite a while. Being in Sheffield has in itself generated new work and lots of ideas for future work." **Hilary Lloyd**



image Hilary Lloyd from *Car Wash*, series of 320 slides, 2005

Residency 3 October/November 2005
'Artists and Contemporary Arts Festivals'

Resident Artist – Becky Shaw

Partner Organisation – Art Sheffield 05: Spectator T

Publicity - 10,000 copies of publicity brochure distributed nationally. Advertisements in Frieze Magazine, Art Monthly and a-n.

Visitors - Approx. 48,500 people visited the month-long event at the different venues in Sheffield, 1000 visitors came to Persistence Works

Information Training event - Spectator T symposium - the relationship between audience and contemporary art festivals. Speakers at the symposium were Gavin Wade, Steve Dutton, Becky Shaw, Tom O'Sullivan and Joanne Tatham, JJ Charlesworth and Sally O'Reilly

Placement artists - Helen de Main, Alexis Gotts and Allie Carr

"Compared to other residencies ... the way this one is set up is probably the best ever, all the artist's needs are addressed. Especially the good fee makes you feel as if you are really cared for. Sheffield is an interesting city and the residency programme is really good. There are very few residency opportunities for artists in the UK that are good and so this is really necessary" **Becky Shaw, resident artist**

"Most of the training I received was 'on-the-job'. This provided a great opportunity for me to work on a large scale, high profile event. I learnt a lot of new skills and feel I got a really good sense of what was involved in putting on the festival. I was given a great level of responsibility and felt my contribution was appreciated. I feel that it really turned a corner in the paid work that I have undertaken and feel much more confident about applying for future posts. This was an invaluable experience." **Helen de Main, placement artist**



front cover publicity brochure
© Designers Republic

YORKSHIRE ARTSPACE SOCIETY

CARA, April-June 2005

Yorkshire ArtSpace was successful in getting a CARA - Creative Action Research Award, a Creative Partnerships initiative delivered through CAPE UK. We ran a creative action research project around pupil voice, pupil decision making and the science curriculum.

Partner Organisation – Shirecliffe Junior School, Sheffield

Lead artist - Carmel Page,

Publication - National research programme and a summary publication of findings has been produced by CP and CAPE



image by Rachael Dodd from CARA project

Adult Silversmithing Workshops, September-December 2005

Yorkshire ArtSpace hosted a series of adult public workshops at Persistence Works during autumn 2005. All workshops were fully booked with the maximum of 15 attendees at each session.

Partner Organisation - Sheffield Galleries and Museums Trust

Lead artists – Treasure Token Jewellery with Tanja Ufer, Silver Spoons with Owen Waterhouse, Photo etching in silver with Victoria Kershaw, Hand etching in silver with Amba McNamara.

Exhibition These silversmithing workshops complemented the *'Treasures of Today'* exhibition at Millennium Galleries

We ran **educational tours of Persistence Works** studio complex for students of art and design from Norton and Chesterfield Colleges and architecture students from Leeds Metropolitan University; 12, 42 and 60 respectively received a talk from the Education & Outreach Programme Manager giving background to the building and programme and then visited 4 artists in their studios each giving a short verbal presentation about their work followed by Q&A session. We also ran a careers and creativity day at Persistence Works for young people on the **Create Programme** run by the Millennium Galleries. They were given a tour of the studios followed by a metal sculpture session with artist Gillian Brent.

YORKSHIRE ARTSPACE SOCIETY

From December 2005 we have been operating as brokers for the **Learning and Skills Council's** Specialist Skills Programme. We have helped 3 artist/makers to access skills training and attend conferences. This will continue until December 2007.

Starting Out - September/October 2005

21 emerging visual artists and makers had access to a 6-day course which ran over 6 weeks during September and October.

Speakers from the artist community in Sheffield, legal profession, other UK based APD providers and the Arts Council Yorkshire

Partner Organisation – Learning & Skills Council, Arts Council England - Yorkshire (funders)

'This course has come at exactly the right time for me. It can be a really difficult time leaving college and this course has motivated and inspired me and made me feel that this 'being an artist' is something I can do. It has been an incredibly useful introduction to all the different tools and skills I need to try and get my career going. Thank you.'

participant Starting Out 2005

Starter Studio Programme: September 2005 – September 2006

Designer Silversmiths

In September 2005 2 additional silversmiths joined the 4 silversmiths who started in September 2004, bringing the total number of silversmiths benefiting from this programme up to 6.

Partner Organisation – The Sheffield Assay Office, Worshipful Company of Goldsmiths

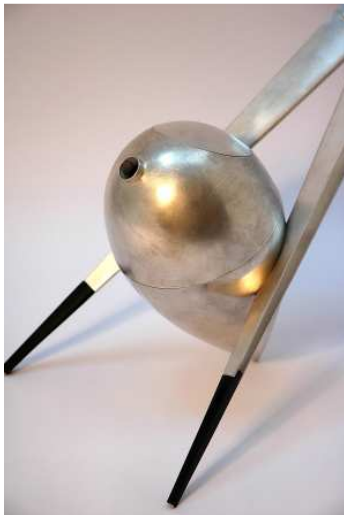
Participants – Owen Waterhouse, Victoria Kershaw, Amba McNamara, Rebecca Lawley, Maya Selway and Victoria Delaney

technical and design consultant - Cameron Maxfield

Mentors – Brett Payne, Chris Knight, Maria Hanson, Ketih Tyssen and Jeff Durber

Exhibition - '**Little Gems**' six month exhibition in the foyer of the Millennium Gallery

Commissions - Assay Office commissioned work - three of the pieces have now been donated to the Millennium Galleries Contemporary Metalwork Collection and Owen Waterhouse's piece has been kept for the Assay Office collection



Awards - Victoria Kershaw won the ABDS 'Argex Award' and the Worshipful Company of Goldsmiths 'Silver Award' in 2006 with the Assay Office commissioned work 'cake slice and stand'. All silversmiths received an 'I-Start' grant via Inspiral which helped with marketing.

Other - Owen Waterhouse was commissioned to make the badge of honour for the Lord Mayor's consort.

Owen Waterhouse – 'tripot'
Photography:- © Sarah Featherstone

YORKSHIRE ARTSPACE SOCIETY

Visual Art

Participants - Becky Bowley Nottingham, Bodil Frenberg Falmouth

Mentors – Lisa Watts and Tracey Holland

Exhibition - Becky Bowley was selected for the group show (dis)comfort at Angel Row in Nottingham in 2005 and Bo Frenberg showed her work in Stuttgart, Germany after being spotted at the Rhubarb Rhubarb photography fair in Birmingham

Awards – Bodil Frenberg received an Arts Council Grants for the Arts Award for the purchase of equipment and production of new work and a promotional brochure. Both received an Inspirial I-Start grant worth £1000 for purchasing equipment and help with marketing.



Photograph by Bodil Frenberg

Monthly Surgery Sessions

Monthly 1-2-1 advice sessions were introduced in November 2004. These 1 hour sessions are set up to provide advice on career development, applications to funders, approaching galleries and such matters. Between March 2005 and March 2006 15 artists benefited from the monthly surgery sessions.

Rachael Dodd, Programme Manager, Education and Outreach
Mir Jansen, Programme Manager, Artists' Professional Development

Exhibitions and Events

April 2005 heralded a new round of **exhibitions** selected by the Curatorial Committee. A total of 13 exhibitions were held in the reception space and, in keeping with our Artistic Policy, the exhibitions represented the diversity of visual arts and crafts made by our members. An Open Members show, experimental video, ceramics, textiles, painting, new media, sculpture and two photographic shows accounted for nine of the total 13 exhibitions in Reception.

April 2005 heralded a new round of exhibitions selected by the Curatorial Committee. A total of 13 exhibitions were held in the reception space, and in keeping with our Artistic Statement the exhibitions represented the diversity of visual arts and crafts made by our members. An Open Members show, experimental video, ceramics, textiles, painting, new media, sculpture and two photographic shows accounted for nine of the total 13 exhibitions in Reception.

Persistence Works Exhibitions

April 2005 to March 2006

7th-27th April 2005...Im Material...Becky Bowley...video installation
30th April-7th May...Open Up Sheffield...mixed members show
10th May-3rd June...Metalwork & Jewellery Degree Shows...Sheffield Hallam University
9th-30th June...Open Exhibition...mixed members show
6th-27th July...Juliet Heatley...solo exhibition of porcelain and stoneware vessels
3rd-24th August...Flight...Bo Frenberg...solo photographic exhibition
7th-28th September...Things Unknown proposed as things forgotten...Roger Gibson, Liz Frolich and Russell Morris...group sculpture show
5th-26th October...Rain Rain...Seiko Kinoshita...solo textiles exhibition
November and December 2005...Open Studios and Christmas Tree Charity Auction
6th-24th February 2006...AMEN...Laura Obon...solo painting exhibition
6th-24th March...Fourth Most Common...Lizz Tuckerman...solo exhibition of mixed and new media

The annual **Metalwork and Jewellery Degree Show** by students from Sheffield Hallam University occupied both reception and the Public Art Space during May and June 2005. The **November Open Studios Event** was a huge success; 37 artists and craft makers opened their studios to over 700 visitors. The event was launched with a VIP night with music from the Pisgah String Ensemble. During Open Studios a Christmas Star Charity Auction saw the reception space transformed into a forested Winter Wonderland. The auction sold stars made by our space holders, and raised £400 for the Friends of Abbeydale Cinema Restoration Fund.

Two other events are worthy of note; in December 2005 the space was used for a weekend of piano recitals by Philip Thomas and in February a life-sized stage set of a Korean War army barracks was built for the Lyceum Theatres.

Viv Mager, Receptionist

YORKSHIRE ARTSPACE SOCIETY

The year's finances

Below in table form is a summary of the Management Accounts for the year of the report. These are based purely on income and expenditure (excluding any building depreciation) to aid members' understanding of our day to day finances. These accounts look at three separate areas of our activity – premises, programme (outreach and training activity) and organisation (relating to our other non-studio activity). This enables us to see how each of the three areas is meeting costs. The Organisation made an operating loss of £3k.

	Income	Expenditure	Difference	Notes
<i>Premises</i>	119k	122k	(3)k	<i>Shortfall in space hire income, increased expenditure on building repairs e.g. plant room leaks</i>
<i>Programme</i>	140k	138k	2k	<i>Re-planning the timing of the residencies accounted for an overall saving during 05/06</i>
<i>Organisation</i>	14k	16k	(2)k	<i>No major variances to the original budget</i>
Total	273k	276k	(3)k	

Stuart Wright, Operations Manager

The following summary of financial statements on pages 13 to 14 has been extracted from the statutory report and financial statements of Yorkshire ArtSpace Society Limited, which were approved by the Board on 25 January 2007 and signed on its behalf by the Directors. The full financial statements were given an unqualified audit report by the company's auditors Messrs. Allotts, Chartered Accountants. The full financial statements have been delivered to the Registrar of Companies and the Charity Commission. These summarized accounts are not statutory accounts and may not contain sufficient information to allow for full understanding of the financial affairs of the charity. For further information the full annual accounts, the auditors' report and the directors' report should be consulted: copies of these can be obtained from the company's office.

YORKSHIRE ARTSPACE SOCIETY

YORKSHIRE ARTSPACE SOCIETY LIMITED
STATEMENT OF FINANCIAL ACTIVITIES
FOR THE TEAR ENDED 31 MARCH 2006

		UNRESTRICTED FUNDS	RESTRICTED FUNDS	TOTAL FUNDS	TOTAL FUNDS
	NOTES	2006 £	2006 £	2006 £	2005 £
INCOME AND EXPENDITURE					
INCOMING RESOURCES					
Activities in furtherance of the charity's objects	2	127,970	101,737	229,707	328,439
Investment income - bank interest		1,568	-	1,568	22
TOTAL INCOMING RESOURCES		129,538	101,737	231,275	328,451
RESOURCES EXPENDED					
Charitable expenditure:					
Costs of activities in furtherance of the charity's objects	3	114,993	196,194	311,187	405,055
Management and administration of the charity	4	2,302	-	2,302	1,871
TOTAL RESOURCES EXPENDED		117,295	196,194	313,489	406,926
NET (OUTGOING)/INCOMING RESOURCES FOR THE YEAR		12,243	(94,457)	(82,214)	(78,475)
BALANCE BROUGHT FORWARD AT 1ST APRIL 2004		1,738	4,794,181	4,795,919	4,874,394
BALANCE CARRIED FORWARD AT 31ST MARCH 2005		13,980	4,699,724	4,713,704	4,795,919

The notes attached form part of these financial statements.

YORKSHIRE ARTSPACE SOCIETY

YORKSHIRE ARTSPACE SOCIETY LIMITED
BALANCE SHEET AT 31 MARCH 2006

		2006		2005	
		£	£	£	£
	NOTE				
FIXED ASSETS					
Tangible assets	7	4,719,140		4,823,750	
CURRENT ASSETS					
Other debtors		15,571		46,888	
Cash at bank and in hand		<u>76,726</u>		<u>96,034</u>	
		92,297		142,922	
CREDITORS:					
Amounts falling due within one year	8	<u>97,733</u>		<u>170,753</u>	
NET CURRENT (LIABILITIES)			(5,436)		(27,831)
TOTAL ASSETS LESS CURRENT LIABILITIES			<u>4,713,704</u>		<u>4,795,919</u>
CAPITAL AND RESERVES					
Unrestricted funds			13,980		1,738
Restricted funds	9		<u>4,699,724</u>		<u>4,794,181</u>
			<u>4,713,704</u>		<u>4,795,919</u>

YORKSHIRE ARTSPACE SOCIETY



The Sheffield Assay Office



YORKSHIRE ARTSPACE SOCIETY

Persistence Works, 21 Brown Street, Sheffield, S1 2BS

0114 276 1769 (tel and fax) **info@artspace.org.uk** (e-mail) **www.artspace.org.uk**

Registered Charity No. 1049370, Company Registration No. 303 4923, VAT No. 737719009